



OFFICIAL AGENDA  
STARKVILLE TREE ADVISORY BOARD  
CITY OF STARKVILLE, MISSISSIPPI  
MEETING OF WEDNESDAY, September 6, 2017  
2<sup>ND</sup> FLOOR CITY HALL – COMMUNITY DEVELOPMENT,  
110 West Main Street, 11:00 AM

- I. CALL TO ORDER
- II. ROLL CALL
- III. CONSIDERATION OF THE OFFICIAL AGENDA
- IV. CONSIDERATION FOR APPROVAL OF MINUTES
  - A. Consideration of the Unapproved minutes for April 5, 2017
- V. NEW BUSINESS
  - A. LW 17-03 Request for Landscape Waiver from several sections for a property located on Spruill Industrial Park Road in an M-1 zone with the parcel number 102N-00-005.01
- I. ADJOURN



**UNAPPROVED**

**MINUTES OF THE MEETING OF THE  
STARKVILLE TREE ADVISORY BOARD  
THE CITY OF STARKVILLE, MISSISSIPPI  
April 5, 2017**

The Starkville Tree Advisory Board held their regularly scheduled meeting at 11:00 AM on April 5, 2017 in the Community Development Department at City Hall. Members present were Stephen Grado, Richard Harkess, Billy Kelly, Scott Willard and Jason Gordon. Not present was member John Cartwright, Jamey Bachman, and Will Sanders. Attending the Board meeting were City Planner Daniel Havelin and Assistant City Planner Emily Corban.

**OFFICIAL AGENDA  
STARKVILLE TREE ADVISORY BOARD  
CITY OF STARKVILLE, MISSISSIPPI  
MEETING OF WEDNESDAY, April 5, 2017  
2<sup>ND</sup> FLOOR CITY HALL – COMMUNITY DEVELOPMENT,  
110 West Main Street, 11:00 AM**

- I. CALL TO ORDER
- II. ROLL CALL
- III. CONSIDERATION OF THE OFFICIAL AGENDA
- IV. CONSIDERATION FOR APPROVAL OF MINUTES
  - A. Consideration of the Unapproved minutes for February 1, 2017
- V. NEW BUSINESS
  - A. LW 17-02 Request for Landscape Waiver from Vehicular Use Area requirements at northwest corner of the intersection of North Montgomery Street and University Drive
  - B. Discussion of Landscape Ordinance Update
- I. ADJOURN

The Board considered the matter of approval of the written agenda dated April 5, 2017. The Board voted unanimously to approve the written agenda as presented.

**CONSIDERATION OF APPROVAL OF THE MINUTES FOR  
FEBRUARY 1, 2017**

After discussion and upon the motion of Mr. Kelly, duly seconded by Mr. Harkess, the motion to approve the Minutes of the February 1, 2017 Tree Advisory Board meeting received unanimous approval.

**NEW BUSINESS**

**LW 17-02 REQUEST FOR LANDSCAPE WAIVER FROM VEHICULAR USE  
AREA REQUIREMENTS AT NORTHWEST CORNER OF THE INTERSECTION  
OF NORTH MONTGOMERY STREET AND UNIVERSITY DRIVE**

City Planner Daniel Havelin presented the waiver request to the Board. The Applicant's representative, Saunders Ramsey, explain the request to the Board. After discussion among the Board Members, the Board deliberated. Mr. Kelly moved to accept the waiver request landscape island requirement between head to head parking as required by section 112-31 (section 6) of the landscape ordinance with two conditions, which was seconded by Mr. Gordon, and the Board voted unanimously to approve. The approved recommended conditions are as follows:

1. Fifteen canopy trees shall be place along the right of way
2. Prior to the movement of power lines, Starkville Utilities shall consult with a representative of the Starkville Tree Advisory Board about the trimming of existing trees on the west side of North Montgomery.

**ADJOURNMENT**

. The meeting will be held on the 2<sup>nd</sup> floor of City Hall. There being no further business before the Starkville Tree Advisory Board, the Board adjourned the meeting.

---

Jason Gordon, Chair

---

Daniel Havelin, City Planner

DRAFT





**THE CITY OF STARKVILLE**  
**PLANNING DEPARTMENT**  
**TREE ADVISORY BOARD**  
 CITY HALL, 110 WEST MAIN STREET  
 STARKVILLE, MISSISSIPPI 39759

**STAFF REPORT**

**To:** Members of the Starkville Tree Advisory Board  
**From:** Daniel Havelin, City Planner (662-323-2525 ext. 3136)  
 Emily Corban, Assistant City Planner (662-323-2525 ext. 3138)  
**Subject:** LW 17-03 Request for Landscape Waiver from several sections for a property located on Spruill Industrial Park Road in an M-1 zone with the parcel number 102N-00-005.01  
**Date:** September 6, 2017

The purpose of this report is to provide information regarding a Landscape Waiver request by Jason Pepper on behalf of SER LLC to allow for a relief from section 6 and 7 of the landscape ordinance for a property located +/-200' east of the intersection of Spruill Industrial Park Road and Industrial Park Road in a M-1 zone with the property #102N-00-005.01. Please see attachments 1- 5.

**BACKGROUND INFORMATION**

The applicant is seeking a Landscape Waiver to build a metal building for lease. The site is currently a gravel parking/storage area with no existing trees. There is currently no structures on the site.

**LANDSCAPE WAIVER REQUEST**

- Request #1- Relief from Sec. 112-31. - Section 6. Requirements for vehicular use areas.
- Request #2- Relief from Sec. 112-32. - Section 7. Landscape requirements for non-vehicular open space areas.

**CODE REFERENCE**

**Sec. 112-31. –Section 6. Requirements for vehicular use areas.**  
 (a) Interior of parking areas. Landscape requirement are shown on Table 6-1.

*Table 6-1. Minimum Interior Landscaping for Offstreet Parking*

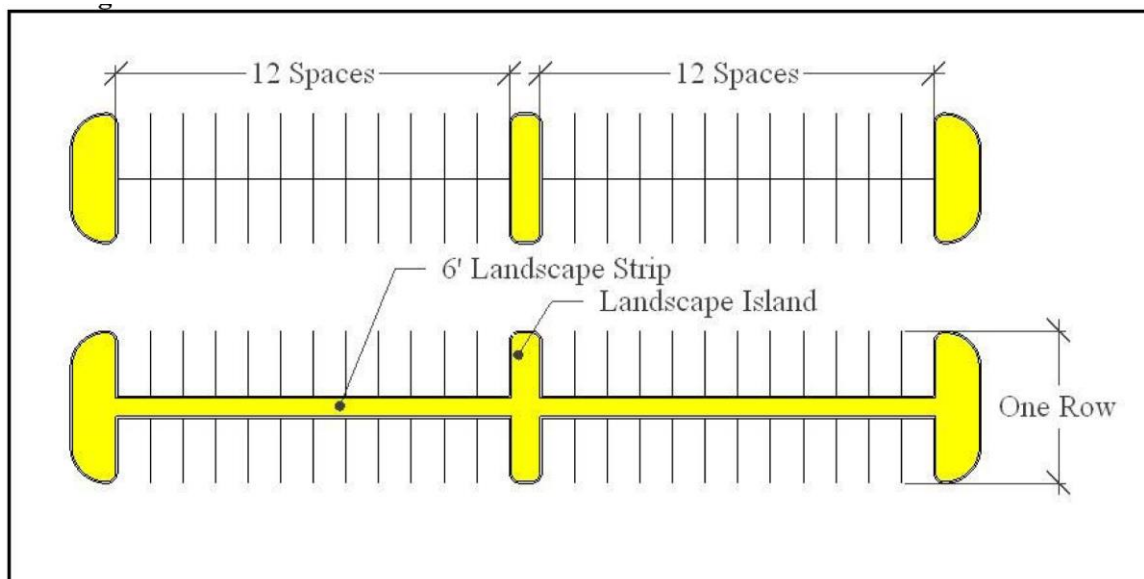
<i>Parking Area</i>	<i>Minimum Landscape area</i>
<i>Less than 50,000 square feet</i>	<i>5% of total parking area</i>
<i>More than 50,000 square feet</i>	<i>10% of total parking area</i>

*Does not include required perimeter landscape area.*

- (1) *Parking lots shall be designed so no more than 12 parking stalls shall be in an uninterrupted row. Rows shall be separated with a landscaped area with the minimum dimension of a single parking stall (refer to Appendix A Zoning, Article VIII Off-Street Parking for dimensions).*

- (2) The end of each aisle and corner area shall be landscaped. End of aisle shall have minimum dimension of a single parking stall.
- (3) Total number of required canopy trees shall be one tree for each 200 square feet or a fraction thereof, of required landscape area.
- (4) Where two rows of parking spaces are adjacent (head to head) to one another, a landscaped strip with a minimum width of six feet shall be planted along the common boundary to separate the parking stalls. For lots with more than two rows of parking and more than 100 parking spaces, every other row shall have landscaped strip. See Figure 6-1.

Figure 6-1



- (b) Perimeter of parking areas. Landscape area dimensional requirements for the perimeter of the parking area are shown on Table 6-2.
  - (1) A shrub screen with a height shown in Table 5-3 shall be continuous along perimeter of parking areas adjacent to property lines. For perimeter adjacent to roadway landscape strips, the landscape strip shall have the required landscape screening. See section 112-30(b).
  - (2) Perimeter calculations shall not include accessways or cross easements to adjacent properties or roadways.

Table 6-2. Minimum Perimeter Landscaping for Offstreet Parking

Parcel Size	Perimeter Landscaping Width	One Canopy Tree Per
Less than 50,000 square feet	5 feet	175 square feet
More than 50,000 square feet	10 feet	350 square feet

**Sec. 112-32. – Section 7. Landscape requirements for non-vehicular open space areas.**

*Landscape material shall be planting in the non-vehicular open space not included in the roadway frontage or vehicular use area requirements.*

*Table 7-1. Non-Vehicular Open Space Requirements*

<i>Percentage of Site in Non-Vehicular Open Space</i>	<i>Plant Units Required**</i>
<i>Less than 50%</i>	<i>120 per 1,800 square feet</i>
<i>More than 50%</i>	<i>50 per 1,800 square feet</i>

*One Canopy Tree is required per 1,800 square feet.*

*See Table 5-2. Plant Unit Value.*

- (a) All structures shall have landscaping around their base.*
- (b) Canopy trees, as required above, shall be spaced in clusters or situated in strategic locations consistent with good principles of design and plant installation. Trees will be planted in locations where they can grow to their mature height and spread.*

*(Ord. No. 2014-1, § 7, 9-16-14)*

Attachment 1  
LW 17-03 Aerial



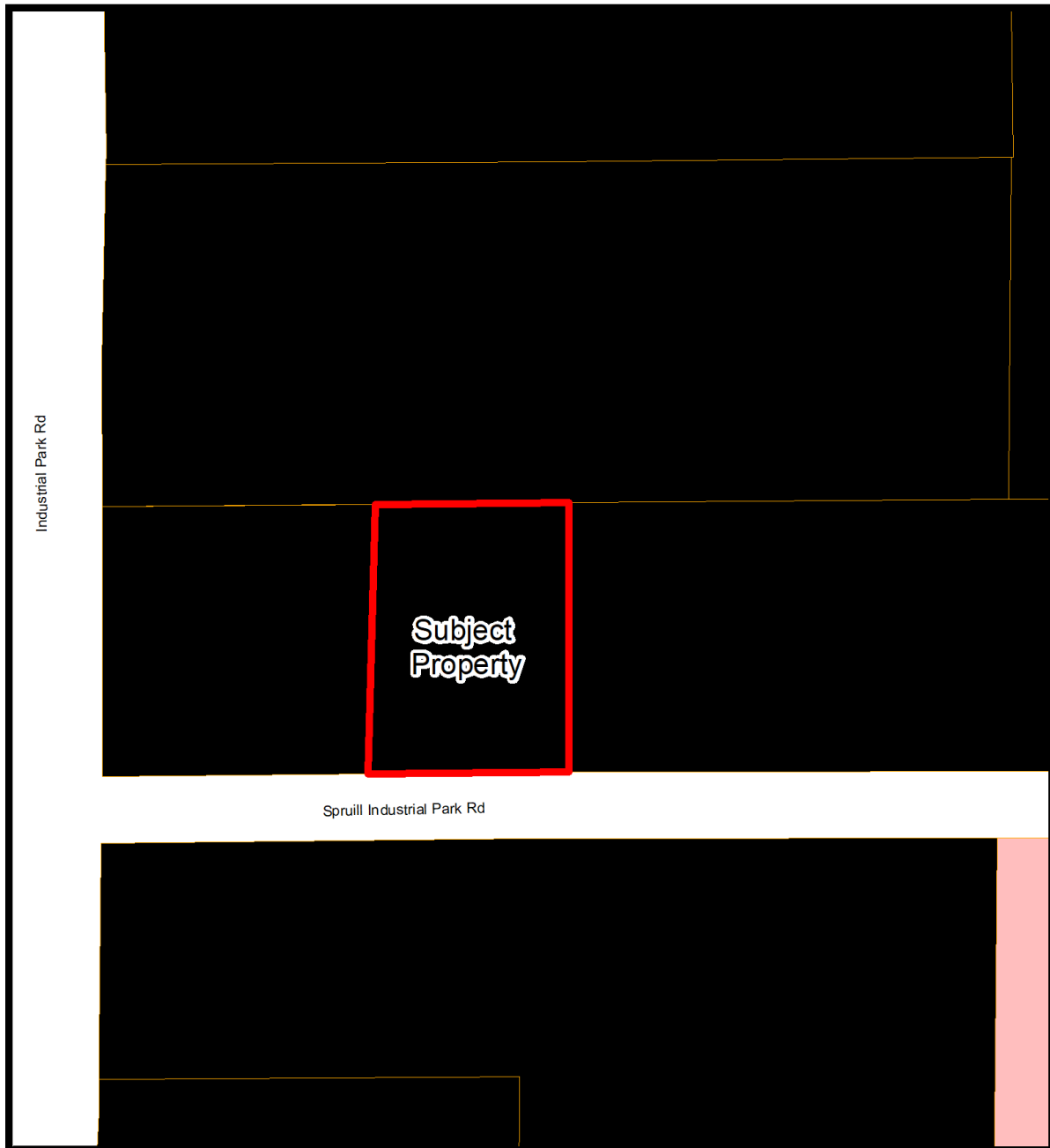
**Legend**

 Property

  
**NORTH**

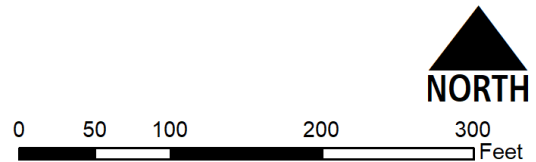
0 50 100 200 300  
Feet

Attachment 2  
LW 17-03 Zoning



**Legend**

-  Property
-  M-1 Manufacturing
-  R-5 Multi-Family, High-Density

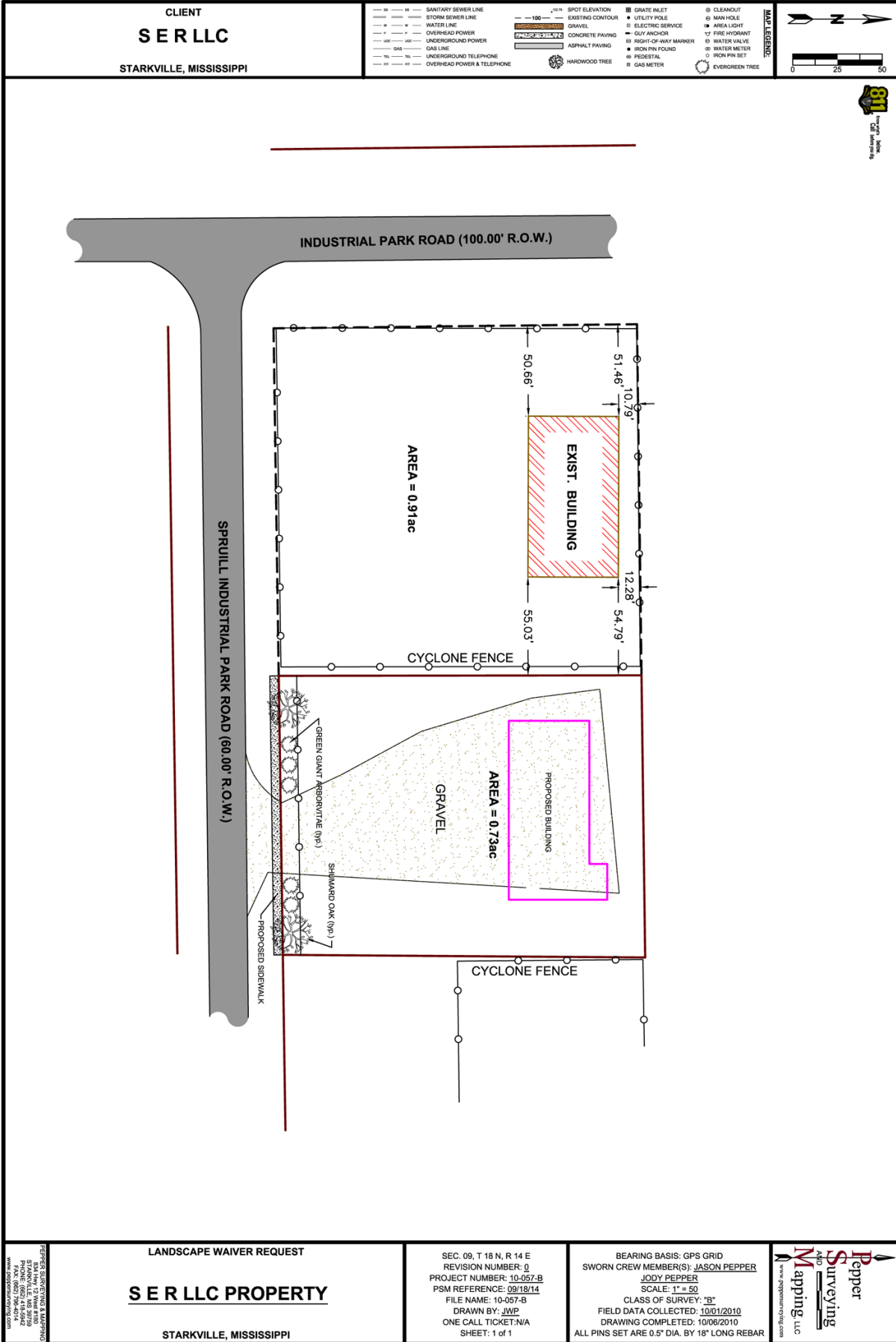


Attachment 3- Streetview Picture of Subject Property



View looking north at subject property

# Attachment 4- Preliminary Landscape Plan



Attachment 5- Enlarged Preliminary Landscape Plan

